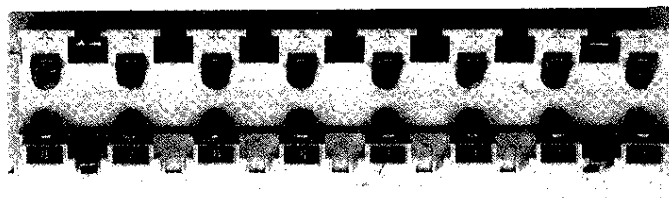
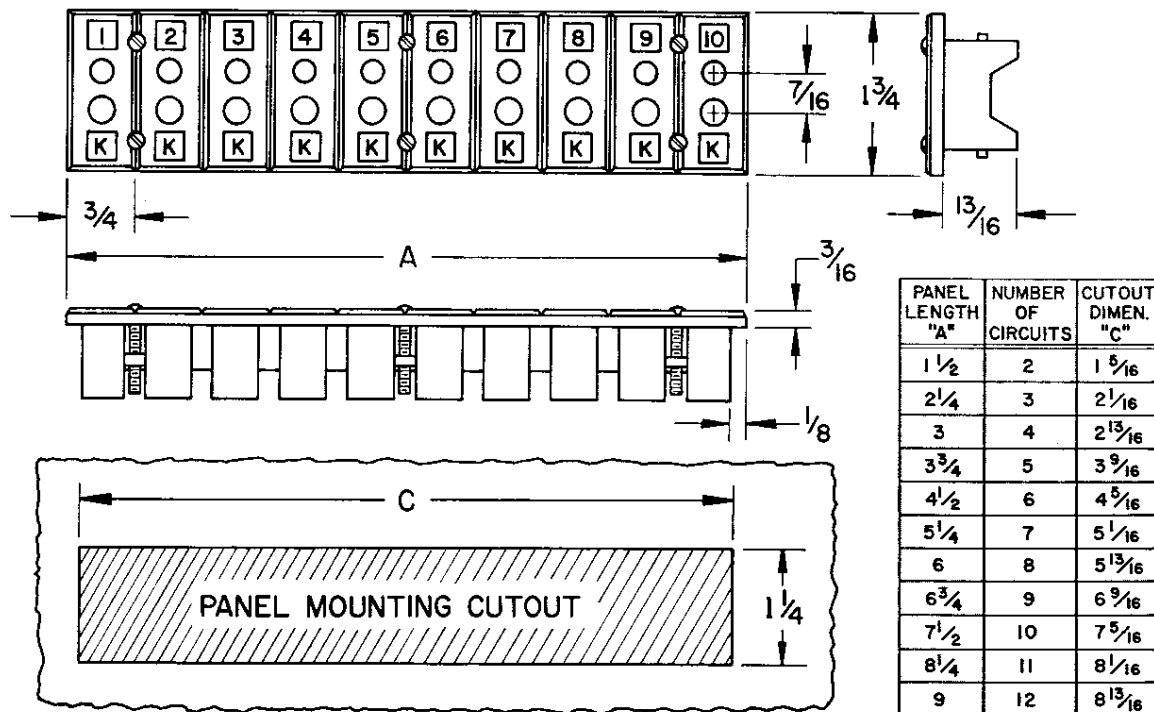


# CONNECTORS FULL SIZE — 2-POLE STRIPANEL®

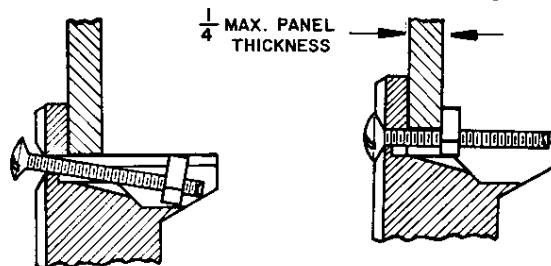
CATALOG NUMBER 1032



(BACK VIEW)

- Strippanels available 2 to 12 circuits - Color coded.
- For cutouts — Does not require mounting frame or mounting holes.
- Strippanels can be wired and installed completely from front. Patented self-contained fastening device, "T Nut", is permanently attached, simplifies mounting, holds tight. Patent No. 3046516.
- Thermocouple type and circuit numbers are marked on face of Strippanel with corresponding circuit numbers and polarity identification on the back. Strippanels are numbered starting from "1" unless specified otherwise.
- Strippanels are molded of glass-filled thermoset compounds (will not melt) for high strength and dependability. The color coded panels will withstand ambient temperatures to 400°F (205°C) continuous and 500°F (260°C) intermittent. High-Temperature panels (All Hi-Temp panels are color coded red) will withstand ambient temperatures to 800°F (425°C) continuous and 1000°F (540°C) intermittent.
- Inserts are spring-loaded collet type to assure positive full contact with the negative insert larger making it virtually impossible to mismatch.
- For corrosive application, gold plated contacts are available. Caution — system errors can result from use of plated contacts if significant thermal gradients exist.

### SELF-CONTAINED FASTENING DEVICE



Ready for installation, T-nuts are out of the way at bottom of track.

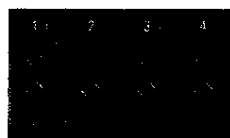
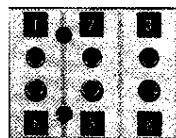
**COMPLETELY FRONT FASTENING**  
Screws accessible from the front draw T-nuts up molded track and hold them tight against back wall.

TYPE CODE	INSERT MAT'L ALLOY		COLOR CODE
	POSITIVE	NEGATIVE	
J	IRON	CONSTANTAN	BLACK
T	COPPER	CONSTANTAN	BLUE
K	CHROMEL™	ALUMEL™	YELLOW
N	NICROSIL	NISIL	ORANGE
R	COPPER	#11 ALLOY	GREEN
S	COPPER	#11 ALLOY	GREEN
E	CHROMEL™	CONSTANTAN	VIOLET
U	COPPER	COPPER	WHITE
C	#405 ALLOY	#426 ALLOY	BROWN
(ALL HI-TEMP STRIPANELS)			RED

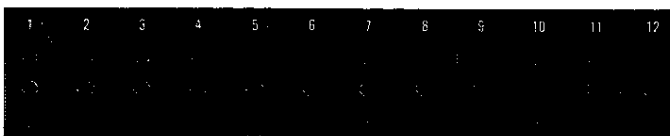
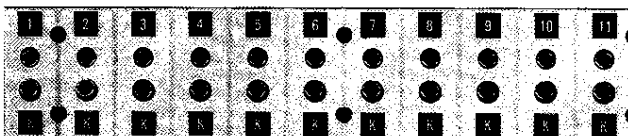
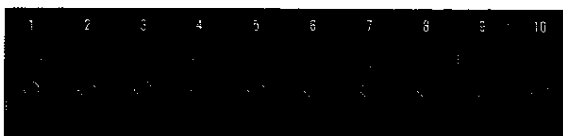
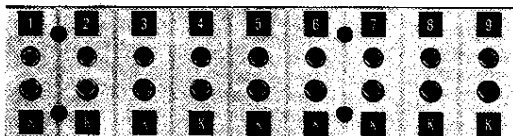
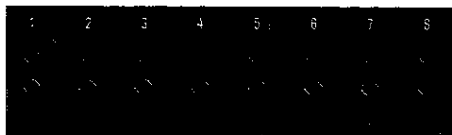
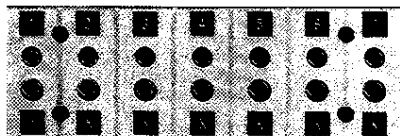
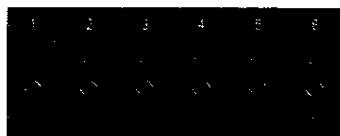
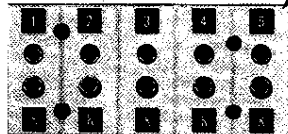
Distributed by: **B. J. Wolfe Enterprises, Inc.** · (<http://www.bjwe.com>)  
5321 Derry Avenue, Unit E · Agoura Hills, CA 91301  
(800) 554-1224 · +001 818 889-8412 · Fax (818) 889-8417

# CONNECTORS FULL SIZE — 2-POLE STRIPANEL®

STANDARD 2-POLE/ HI-TEMP 2-POLE	
CODE NUMBER	PRICE
1032-2-(*)	
1132-2-(*)	
1032-3-(*)	
1132-3-(*)	
1032-4-(*)	
1132-4-(*)	
1032-5-(*)	
1132-5-(*)	
1032-6-(*)	
1132-6-(*)	
1032-7-(*)	
1132-7-(*)	
1032-8-(*)	
1132-8-(*)	
1032-9-(*)	
1132-9-(*)	
1032-10-(*)	
1132-10-(*)	
1032-11-(*)	
1132-11-(*)	
1032-12-(*)	
1132-12-(*)	



Standard Panels Shown  
Hi-Temp Panels are Color Coded "RED"  
(See Page 33 for Hi-Temp)



**TO ORDER:**

- 1) Give Stripanel No. 1032 - 6 - K
- 2) Specify No. of Circuits  $\uparrow$   $\uparrow$
- 3) Specify T/C Type by Code  $\uparrow$
- 4) For Vertical Strippanels Add Suffix "V" eg. 1032 - 6 - K - V
- 5) For High-Temp Strippanels: 1132 - 6 - K
- 6) Availability: J,K,T,N,E,R,S,U, also "C" at extra cost.
- 7) Gold plated inserts are available at extra cost. "G" (i.e. 1032-6-K-G).

THERMOCOUPLE TYPE	COLOR CODE
T	BLUE
J	BLACK
E	VIOLET
K	YELLOW
N	ORANGE
S	GREEN
R	GREEN
C	BROWN
U	WHITE
ALL HI-TEMP	RED

\*TYPE CODE

**Distributed by: B. J. Wolfe Enterprises, Inc. • (<http://www.bjwe.com>)**  
**5321 Derry Avenue, Unit E • Agoura Hills, CA 91301**  
**(800) 554-1224 • +001 818 889-8412 • Fax (818) 889-8417**